

## Anti-GFP antibody

mouse: IgG1

Clone: GFP. C2

**Specificity:** Recognizes native and denatured forms of GFP and its variants EGFP, YFP, EYFP, and CFP.

**Immunogen:** GFP from the jellyfish *Aequorea Victoria* N-terminal peptide-KLH conjugates.

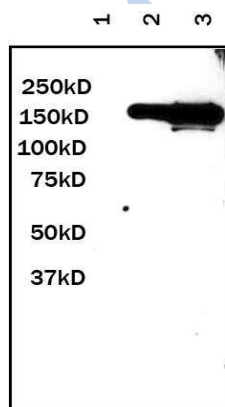
**Sensitivity:** 1-10 ng of purified GFP or GFP fusion proteins (Western blot developed with ECL).

**Application:** ELISA, Dot blot, Western blot, Immunoprecipitation, and Immunostaining.

**Form:** 1mg/ml in 10mM PBS, PH 7.2 with 0.1%  $\text{NaN}_3$ .

**Working condition:** 1: 1,000 dilution (incubation for one hour at room temperature) for Western Blot with ECL. In order to obtain best results in other assays (ELISA, Dot blot, IPetc), please determine optimal working dilution by titration test.

**Storage:** Store at  $4^{\circ}\text{C}$  (add 0.1%  $\text{NaN}_3$ ) for several months, at  $-20^{\circ}\text{C}$  for longer period. Avoid repeated freeze-thaw cycles.

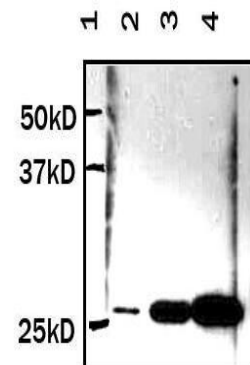


Lane 1: Negative Control.

Lane 2: 1 µg GFP Fusion Protein Lysate

Lane 3: 10 µg GFP Fusion Protein Lysate

Antibody working Cont: 1:1,000 from 1 mg/ ml stock  
Cont.



GENTAUR

Gentaur Molecular Products  
Voortstraat 49  
1910 Kampenhout, Belgium