



Anti-Human IL-1 β *Polyclonal Antibody*

Catalog: PAR-100-IL1B

Specifications and Use

Target: Human Interleukin-1 beta

Host and Purification: Ig Fraction of Rabbit Serum

Immunogen: Full length recombinant Human IL-1 β

Buffer: 0.02 M Potassium Phosphate, 0.15 M Sodium Chloride, pH 7.2 with no stabilizers or preservatives

Storage: Store at 2-8°C after restoration with 0.1mL deionized water or -20°C for long term storage, avoid repeat freeze thaws.

Size and Label: 100 μ g, Unlabeled

Physical State: Lyophilized

Endotoxin Level: <0.1EUs per ug

Alternate Target Names: Catabolin, LAF, EP, LEM, MCF

Description:

Interleukin-1 beta (IL-1 β) is a pro-inflammatory cytokine, produced in response to inflammatory agents by a variety of cells, including monocytes, macrophages, and dendritic cells (DCs). IL-1 β and IL-1 α are two distinct and independently regulated gene products that comprise IL-1 and signal through the Type 1 IL-1 receptor (IL-1R1). Although IL-1 α is cell associated and IL-1 β is secreted, they have nearly identical biological activity in that they induce adhesion molecule expression on epithelial cells, control fever induction, and play a role in arthritis and septic shock. Signaling activated by the IL-1R1 promotes these activities through a MYD88 signaling pathway similar to those associated with Toll receptors. Human IL-1 β is a 153 amino acid protein, with a molecular weight of 17.4 kDa.

Reported Applications:

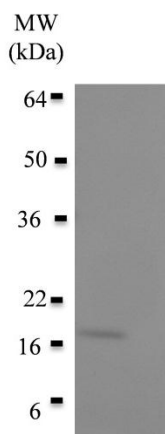
Western Blot
ELISA

Recommended Dilution*:

1:1000 starting
No Data

***INVESTIGATORS ARE ADVISED TO TITRATE ANTIBODIES TO REACH OPTIMAL ASSAY CONDITIONS FOR THEIR SPECIFIC NEEDS.**

THIS PRODUCT IS FOR RESEARCH USES ONLY! THIS PRODUCT IS NOT FOR USE IN HUMANS!!!



Western blot analysis of 1ug recombinant human IL-1beta (100-167) using 0.2ug/mL rabbit anti-human IL-1 beta polyclonal antibody and anti-rabbit secondary antibodies. MW of human IL-1beta is 17.3 kDa.

Gentaaur Molecular Products
Voortstraat 49
1910 Kampenhout, Belgium