



IgG Rabbit Polyclonal to Human Interferon α 2a

Cat. No. RF0013-1

RF0013-50

Product Name.

IgG Rabbit Polyclonal to Human Interferon α 2a

Description.

IgG Anti Human Interferon α 2a is developed in rabbit using recombinant Human Interferon α 2a expressed in plants. Purified IgG prepared by affinity chromatography on protein G.

Immunogen.

CDLPQTHSLGSRRTLMLLAQMRKISLFSCLKDRHDFGFPQEFGNQFQKAETIPVLHE
MIQQIFNLFSTKDSSAAWDETLLDKFYTEL YQQLNDLEACVIQGVGVVTETPLMNEDSI
LAVRKYFQRITLYLKEKKYSPCAWEVVRAEIMRSFSLSTNLQESLRSKE

Source.

Rabbit.

Clonality.

Polyclonal.

Formulation.

Provided as 0.2 μ m sterile filtered solution in phosphate buffered saline. Lyophilized.

Packaging.

100 μ g

Reconstitution.

100 μ l distilled water to a final concentration of 1 mg/ml

Applications.

- ELISA: To detect Human Interferon α 2a by Indirect ELISA a dilution of 1/500-1/1,000 of this antibody is required. This antibody, in conjunction with compatible secondary reagents (anti rabbit AP conjugated), allows the detection of 0.2-1 ng /well of human Interferon α 2a.

- Western Blot: To detect human Interferon α 2a by WB analysis this antibody can be used in a dilution of 1/1000-1/1,500.
- Neutralization: No data available.

Storage/Stability.

Store at -20°C . For long term storage freezes in working aliquots at -20°C . Repeated freezing and thawing is not recommended.

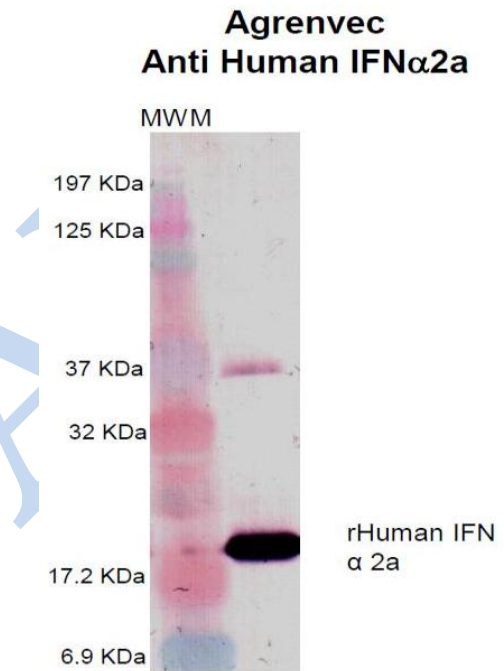
Data

Fig. SDS-PAGE & Western Blot Rabbit IgG Anti-Human Interferon α 2a

The membrane was probed with Agrenvec IgG Anti-IFN α 2a 1: 1,500.

Left lane.- MW marker. (kDa)

Right lane.- 300 ng of Human IFN α 2a protein expressed in E.coli.



Anti-human Interferon α 2a has not been assayed for cross-reactivity with Hu-IFN- β or Hu-IFN- γ or for cross-reactivity with interferon from other species.

Where this antibody has not been tested for use in a particular technique this not necessarily excludes its use in such procedures.

Optimal dilution conditions should be determined by the final user.

Due to Agrenvec Immunogen production system, this IgG have no cross reactions with other mammalian proteins.

Bulk sizes are available upon request.

For R+D purposes only. Purchaser must determine the suitability of the product(s) for their particular use.