



## Rabbit polyclonal IgG Anti-Human Liver X receptor

Cat. No. RF0020-100

RF0020-100

### Product Name.

Rabbit polyclonal Anti-LXR  $\beta$

### Description.

IgG Anti Human LXR is developed in rabbit using recombinant Human LXR produced in plants. Purified IgG prepared by affinity chromatography on protein G. Purity >98%.

### Immunogen.

HHHHHHSSGIEGRGLIKHMTPGGSEAGSQSGEGEGVQLTAAQELMIQQLVAAQL  
QCNKRSFSDQPKVTPWPLGADPQSRDARQQRFAHFTELAIISVQEIVDFAKQVPGFLQ  
LGREDQIALLKASTIEIMLLETARRYNHETECITFLKDFTYSKDDFHRAQLQVEFINPIF  
EFSRAMRRLGLDDAEYALLIAINIFSADRPNVQEPGRVEALQPPYVEALLSYTRIKRP  
QDQLRFPRMLMKLVSLRTLSSVHSEQVFALRLQDKKLPPLLSEIWDVHE

### Source.

Rabbit.

### Clonality.

Polyclonal.

### Formulation.

Provided as 0.2  $\mu$ m sterile filtered solution in phosphate buffered saline. Lyophilized.

### Packaging.

100  $\mu$ g

### Reconstitution.

100  $\mu$ l distilled water to a final concentration of 1 mg/ml

### Applications.

- Western Blot: to detect human 250 ng LXR by WB analysis this IgG can be used in a dilution of 1/500 - 1/1,000.
- Neutralization: No data available.

### **Storage/Stability.**

Store at -20°C. For long term storage freezes in working aliquots at -20°C. Repeated freezing and thawing is not recommended.

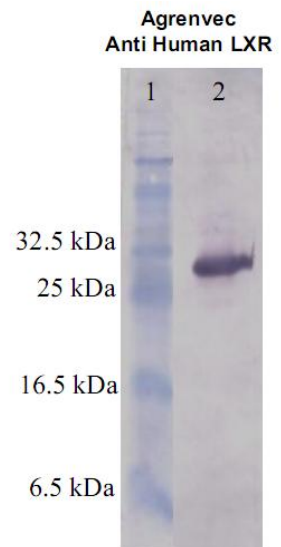
### **Data**

#### **Fig. SDS-PAGE & Western Blot Rabbit IgG Anti-Human LXR.**

The membrane was probed with LXR polyclonal antibody 1:1,000.

Lane 1.-MW marker.

Lane 2.-200 ng of rHuman LXR protein.



Where this antibody has not been tested for use in a particular technique this not necessarily excludes its use in such procedures.

Optimal dilution conditions should be determined by the final user.

Due to Agrenvec Immunogen production system, this IgG have no cross reactions with other mammalian proteins.

**Bulk sizes are available upon request.**

**For R+D purposes only. Purchaser must determine the suitability of the product(s) for their particular use.**