

DATA SHEET

Avian Influenza Virus Antigen Test Kit

■ Principles

Anigen Rapid Avian Influenza Virus Antigen Test Kit is a chromatographic immunoassay for the qualitative detection of avian influenza type A virus antigen in an avian cloaca feces or scattered feces.

Anigen Rapid Avian Influenza Virus Antigen Test Kit has a letter of “T” as **test line** and “C” as **control line** on the surface of the device. The test line and the control line in result window are not visible before applying any samples. The control line is used for procedural control. Control line should be always appeared if the test procedure is performed properly and the test reagents of control line are working. A purple test line respectively will be visible in the result window if there is enough avian influenza virus antigen in the avian cloaca feces swab or scattered feces swab.

The specially selected avian influenza virus antibodies are used in test band as both capture and detector materials. These enable **Anigen Rapid Avian Influenza Virus Antigen Test Kit** to identify avian influenza virus antigen in avian samples with a high degree of accuracy.

■ Materials provided

- 1) Anigen Rapid Avian Influenza Virus Antigen Test Devices x 30
- 2) Sample collection tubes containing 1ml of assay diluent x 30
- 3) Sample collection swabs x 30
- 4) Disposable droppers x 30
- 5) Instruction for use x 1

■ Precautions

- 1) For veterinary use only.
- 2) For best results, strict adherence to these instructions is required.
- 3) All Samples should be handled as being potentially infectious.
- 4) Do not open or remove test kit from their individually sealed pouches until immediately before their use.
- 5) Do not use the test kit if the pouch is damaged or the seal is broken.
- 6) Do not reuse test kit.
- 7) All reagents must be at room temperature before running the assay.
- 8) Do not use reagents beyond the stated expiration date marked on the package label.
- 9) Do not mix components from different lot numbers because the components in this kit have been quality control tested as standard batch unit.

■ Storage and Stability

The kit can be stored at room temperature (2~30°C) or refrigerated. The test kit is stable through the expiration date marked on the package label. **DO NOT FREEZE.** Do not store the test kit in direct sunlight.

■ Sample Collection and Preparation [Refer to the Figure of detailed Sample collection & test procedure]

- 1) Cloaca swab or wet feces swab should be used with this test
- 2) If the samples are not immediately tested, they should be refrigerated at 2~8°C. For storage not less than 48hours, freeze the Sample at -20°C or below.

■ Procedure of the test [Refer to the Figure of detailed Sample collection & test procedure]

- 1) Cloca swab of rectum is recommended for best sensitivity. Take a portion of feces from a stool sample or the cloaca with the sample collection swab.
- 2) Insert the swab into the sample collection tube containing assay diluent.
- 3) Mix the swab until the sample has been dissolved into the assay diluent.
- 4) Leave the tube until the large particles have settled down to the bottom of the tube.(Approximately 1 minute)
- 5) Remove the test device from the foil pouch, and place it on a flat and dry surface.
- 6) Using a disposable dropper provided, take an aliquot from the extracted and mixed sample in the tube.
- 7) Add **4(four) ~ 5(five) drops** into the sample hole with the disposable dropper.
- 8) As the test begins to work, you will see purple color move across the result window in the center of the test device.
- 9) Interpret test results at **20 ~ 30 minutes**.

■ Interpretation of the test

1) Negative result

The presence of only one band within the result window indicates a negative result.



2) Positive result

The presence of two color bands (“T” and “C”) within the result window, no matter which band appears first indicates a positive result.



3) Invalid Result

If the purple color band is not visible within the result window after performing the test, the result is considered invalid. The directions may not have been followed correctly or the test may have deteriorated. It is recommended that the Sample be re-tested.



■ Limitations of the test

- 1) This kit can detect all avian influenza virus type A antigen regardless of high or low pathogenic avian influenza virus. Although the Anigen Rapid AIV Ag Test Kit is very accurate in detecting avian influenza virus antigen, a low incidence of false results can be occurred. This kit is for screening purpose. Other clinically available tests are required if questionable results are obtained. As with all diagnostic tests, a definitive clinical diagnosis should not be based on the results of a single test, but should only be made by the veterinarian after all clinical and laboratory findings have been evaluated.
- 2) **This test kit is not recommended for the testing of pigeon samples as false positive results can occur.**
- 3) The detection limit is 0.13 HAU.

Anigen Rapid Avian Influenza Virus Antigen Test Kit

[Figure of Detailed Sample Collection & Test Procedure]

A. Sample Collection Methods

1. Cloaca feces swab method

- 1) Hold the inside of both wings with one hand.
- 2) Hold the tail part to the upper direction with the other hand.



- 3) Insert the sample collection swab to the cloaca of rectum.
- 4) Smear the inside of the cloaca several times with sample collection swab.



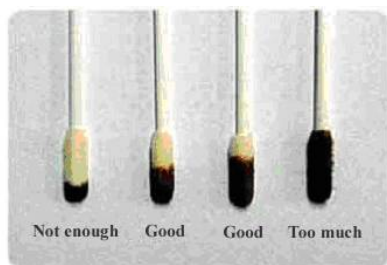
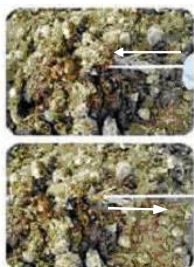
- 5) Pull out the sample collection swab



- 6) The outside of sample collection swab may be seen a gray mucoid or dark brown color.

2. Scattered feces swab method

- 1) Insert the sample collection swab to the feces.
- 2) Agitate the sample collection swab at the inside of feces.
- 3) Pull out the sample collection swab.



B. Test Procedure

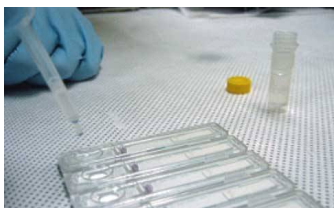
- 1) Insert the swab into the Sample tube containing assay diluent and mix the swab until the sample has been dissolved into the assay diluent.



- 2) Using the disposable dropper provided, take the supernatant from extracted sample in the tube.



- 3) Add **4(four) ~ 5(five) drops** into the sample hole with disposable dropper.



- 4) Interpret test results at **20 ~ 30 minutes**.

[Cautions]

1. Do not swab the feces too much. It may hinder the migration of buffer on the kit.
2. Do not swab the feces too small. It may show negative reaction even though AIV infected feces.