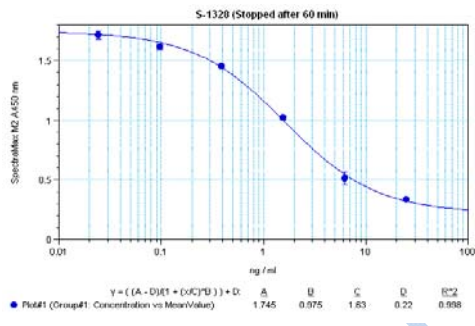


Cat. No. S-1328 Hepcidin-25 (human)

SPECIFICATIONS: Formulated for extracted samples

STANDARD: 1 µg H-5926 H-Asp-Thr-His-Phe-Pro-Ile-Cys-Ile-Phe-Cys-Cys-Gly-Cys-Cys-His-Arg-Ser-Lys-Cys-Gly-Met-Cys-Cys-Lys-Thr-OH, (Disulfide bonds between Cys7 and Cys23/Cys10 and Cys22/Cys11 and Cys19/Cys13 and Cys14)

PROTOCOL: III (Std.Ab1hr.Bt)
RANGE: 0-25 ng/ml
AVERAGE IC₅₀: 1.5 ng/ml
SHELF-LIFE: One year from production date



Suggested Preparation of Standards		
	ng/ml	Range: 0.02 to 25 ng/ml
Stock	1000	
S1	25.00	Add 25 µl stock + 975 µl diluent
S2	6.25	Add 200 µl S1 + 600 µl diluent
S3	1.56	Add 200 µl S2 + 600 µl diluent
S4	0.39	Add 200 µl S3 + 600 µl diluent
S5	0.10	Add 200 µl S4 + 600 µl diluent
S6	0.02	Add 200 µl S5 + 600 µl diluent
S0	0.00	500 µl diluent

CROSS REACTION:

PEPTIDE	%
Hepcidin-25 (human)	100
Hepcidin-25 (rat)	0
Hepcidin-25 (mouse)	0
Angiotensin I (human)	0
Insulin (human)	0
Glucagon (1-29) (human, bovine, porcine, rat, mouse, hamster)	0

Some cross-reactivity data is taken from Radioimmunoassay applications.