



DATA SHEET

Polyclonal Antibody to EDG-1 / S1P1 (C-term) - Aff -Purified

Alternate names: S1P receptor 1, S1PR1, CHEDG1, EDG1, ECGF1, D1S3362, FLJ58121,

Sphingosine 1-phosphate

receptor 1, Endothelial differentiation G-protein coupled receptor 1

Catalog No.: SP4617P

Quantity: 50 µg

Concentration: 1.0 mg/ml

Background: EDG1, a Lysophospholipid/Lysosphingolipid Receptor, binds sphingosine-1-phosphate and

may control cell proliferation, survival, and suppression of apoptosis. Overexpression of EDG-1 leads to increased cell-cell aggregation and overexpression of cadherins.

EDG-1 transcripts have been reported to be present in embryonic and adult brain, lung alveolar macrophages, vascular smooth muscle cells, endothelial cells, fibroblasts, melanocytes, and TAg-Jurkat T cells, but to be absent from breast cancer cell lines.

ESTs have been isolated from brain, breast, heart, eart/melanocyte/uterus, kidney, liver, liver/spleen, lung, nerve, placenta, prostate, tonsil, uterus, and vessel libraries.

Uniprot ID: P21453

Host / Isotype: Rabbit

Immunogen: Synthetic peptide - KLH conjugated.

Epitope: C-terminal domain of human.

Genename: EDG1

Remarks: The immunizing peptide shows 89% identity (94% similarity) with Mouse and Rat.

Format: State: Liquid purified IgG fraction.

Purification: Peptide immunogen Affinity Chromatography.

Buffer System: PBS containing 0.09% Sodium Azide as preservative.

Applications: Immunohistochemistry with Formalin Fixed Paraffin Embedded Tissues: 6 µg/ml.

Antigen retrieval: Steam slides in 0.01 M sodium citrate buffer, pH 6.0, at 99-100°C for 20 min. Remove from heat and let stand at room temperature in buffer for 20 min. Rinse in 1x TBS with Tween (TBST) for 1 min. at room temperature.

Other applications not tested. Optimal dilutions are dependent on conditions and should be determined by the user.

Specificity: Reacts with Sphingolipid Receptor EDG1/S1P1

(family: GPCR, subfamily: Lysophospholipid/Lysosphingolipid).

Species Reactivity: Tested: Human.

Expected from sequence similarity: Mouse and Rat.

Add. Information: This product was originally produced by MBL International.

Storage: Store the antibody undiluted at 2-8°C for one month or (in aliquots) at -20°C to -70°C for longer.

Avoid repeated freezing and thawing.

Shelf life: one year from despatch.

Pictures:

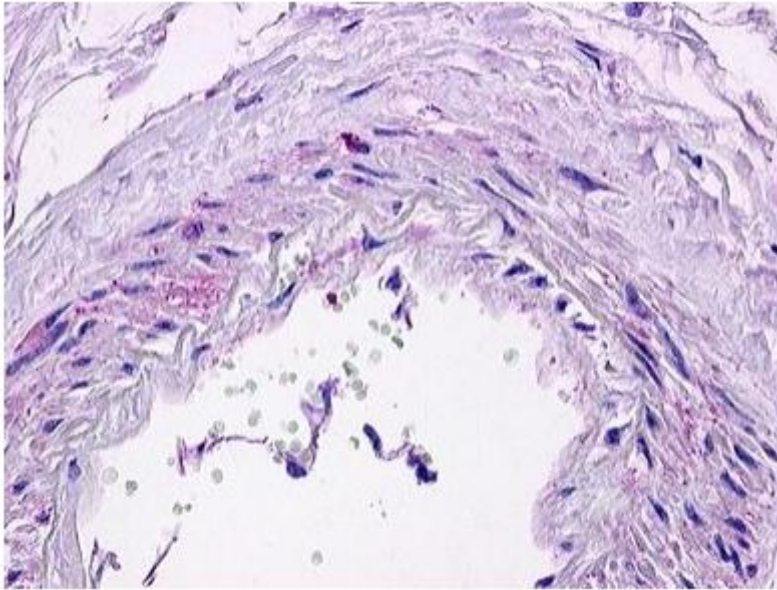


Figure 1. Immunohistochemical staining of heart vessel using anti-Edg1 antibody SP4617P.