

CD172a (SWC3)

Catalog No.

Ig Class

Applications:

% Labeled PBMC:

Species Activity:

YV0184-01

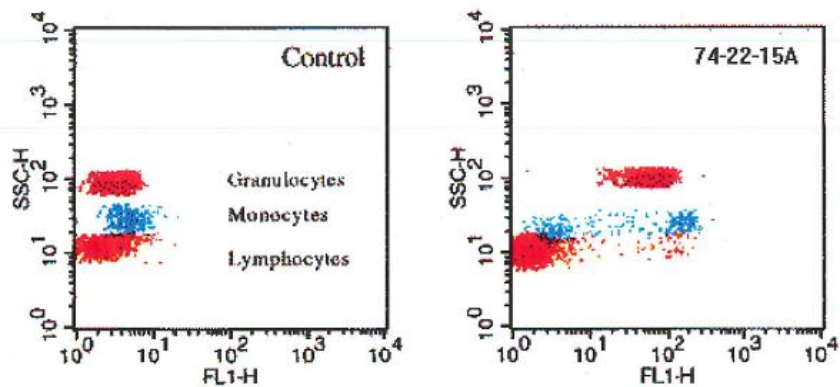
IgG2b (switch variant of 74-22-15)

Flow cytometry, cell function.

12

Cattle	Goat	Sheep	Swine	Horse	Cat	Dog	Ferret	Mink	Human	Mouse	Rabbit
+	+	+	+	+	+	+	+	+	+	+	-

FACS Profile:



FACS profile above obtained with porcine leukocytes.

Also reacts with llama, cynomolgus and rhesus. Does not react with chicken, owl or guinea pig.

Antibody concentration of current lot is 0.834 mg/ml.

This monoclonal antibody is produced as mouse ascites fluid, clarified by centrifugation, and filtered through a 0.2 micrometer filter. The antibody concentration is 1.0 mg/ml in phosphate-buffered saline, preserved with 0.09% sodium azide.

References

- [Certificate of Analysis](#)
- [Lunney, J.K. Characterization of swine leukocyte differentiation antigens. *Immunol. Today* 14\(4\):147-148 \(Apr. 1993\).](#)